



Newtown Primary School Newsletter

Weekly News Update

European Day of Languages

On Tuesday 26th September, Newtown will be celebrating European Day of Languages. Our KS2 children learn French weekly as part of our curriculum so we will be focusing on our closest foreign neighbours, the French!

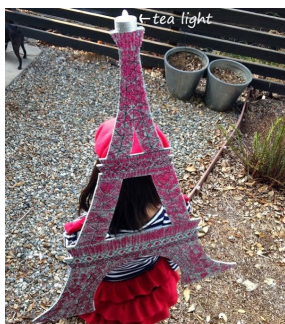
Children and staff are invited to dress up in anything that pays homage to France and its traditions. You might choose to dress up in red, white and blue like the French flag.



You could come dressed as well known French foods like macarons, croissants, quiche, escargot, pain au chocolate, French toast, crème Brulé or ratatouille.



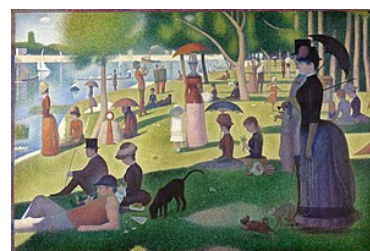
You could come dressed as a famous French landmark like the Eiffel Tower or Disney Land Paris.



Important Dates

- SEN Target Plan reviews 20/22.09.23
- European Day of Languages 26.09.23
- EYFS & Year 1 Phonics Parent Workshop 28.09.23 at 8:45
- NSPCC Online Safety Parent Workshop 02.10.23 at 11:00-12:00
- EYFS Tapestry Parent Workshop 03.10.23 at 2:30 - 3:15
- Year 2 KS1 SATs Parent Workshop 12.10.23 at 8:45
- Year 6 KS2 SATs Parent Workshop 13.10.23 at 8:45
- Parents' Evening 18/19.10.23
- Year 4 Times Table Check Workshop 20.10.23 at 8:45
- Magic Show 25.10.23 at 5:00 - 7:00
- Halloween fancy dress and end of term 27.10.23
- Start of Autumn 2 Term 06.11.23

You may even choose to dress up like famous French art like the Mona Lisa, a Sunday Afternoon on the Island of La Grande Jatte or a self portrait of Vincent Van Gogh.





Newtown Primary School Newsletter

Weekly News Update

EYFS & Year 1 Phonics Parent Workshop

On Thursday 28th September, Newtown will be holding a parent meeting all about phonics.

Would you like to know how to support your child with their reading at home? Would you like to know how your child is taught to read? Would you like to know more about the Phonics Screening Check that all Year 1 children take?

Then come to this workshop on Thursday at 8:45am.



Important Dates

If you'd like to know more about how to keep your children safe online then please attend our NSPCC Online Safety Parent Workshop on Monday 2nd October at 11:00-12:00.



EYFS staff will be holding a Tapestry Parent Workshop on Tuesday 3rd October at 2:30 - 3:15. Come and find out how to access your child's online learning journal and how to support your child's development at home.

Safeguarding Families

If you have concerns about your safety, a child's safety or someone else's then please come and speak to one of Newtown's Designated Safeguarding Leads: Mrs Chesney-Ly, Mr Ludlam, Mrs Merrix or Mrs Smith.

Who should I speak to if I have a concern?
If you have any concerns relating to child protection or safeguarding, please contact one of Newtown's Designated Safeguarding Leads immediately. They are:



Mrs S Chesney-Ly
Headteacher
Designated Safeguarding Lead



Mr G Ludlam
Deputy Head
Deputy Designated Safeguarding Lead



Mrs G Merrix



Mrs A Smith



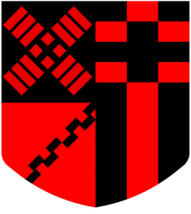
Miss L Caldecott

Nursery & Reception Places

We have spaces available in Nursery and Reception for this and next year. If your child turns 3 at any point between September 2023 and July 2024 then please contact the school to complete a Nursery application.

If your child turns 3 between September 2024 and July 2025 make sure you secure a place for them by completing an application form from our school office.





Newtown Primary School

EYFS Donations

Loose Parts

- Curtain rings
- Buttons
- Lids
- Corks
- Wooden dolly pegs
- Gemstones
- Cotton reels
- Nuts and bolts
- Chunky beads
- Laces

Natural materials

- Seashells
- Pine cones
- Sticks / twigs
- Smooth pebbles
- Acorns
- Conkers
- Rattan balls
- Wood slices

Dressing up items

- Ties
- Waistcoats
- Scarves / fabric
- Bangles
- Handbags
- Hats
- Aprons
- Sunglasses
- Suit jackets

House items

- Pots, pans, baking trays
- Metal jugs
- Metal cups, tea pots, kettles
- Artificial & real plants
- Baskets
- Picture frames (with glass removed)
- Chopping boards
- Plastic jars

Old electrical items (do not need to be working!)

- Computer keyboard
- microphones
- Phones
- Cameras

Reading & Writing

Maths

- Scales
- Measuring jugs
- Playing cards
- Tape measures

Other things

- Wallpaper rolls
- Large tubes
- Paint brushes & rollers
- Twigs
- Guttering
- Crates
- Plastic mirrors
- Ribbon
- Cable reels



Nursery & Reception Donations

EYFS kindly request you have a hunt at home for any unwanted items that will further enhance the children's learning in EYFS.

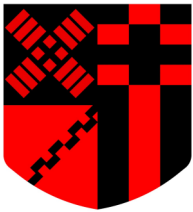
If you have any of the items listed, we would be very grateful if you were able to donate them.

If you do have anything you wish to give, please approach Mrs Taylor or Miss Littlewood from EYFS.



- Water toys
- Sand toys
- Conkers
- Pine cones
- Musical instruments





Newtown Primary School

Attendance News



Autumn 1 Attendance Reward

On Wednesday 25th October Newtown will be having a professional magician visit and do a live performance. Tickets will go on sale nearer the time BUT if you would like to win FREE front row seats for you and your family then all you need to do is make sure you come to school!

96% Attendance Prize Draw

All children who achieve 96% or above will go into a prize draw. 5 children will be chosen at random to win front row, free seats and refreshments for our magic show. To get 96% or above then this means only 1 day of absence or 2 half days of absence.



Holidays in term time will be referred for fine. In 2022– 2023 we referred 25 families who then received a penalty fee for taking their children on holiday in term time. If this is repeated then families will be referred to legal intervention. Children whose attendance is persistently low (below 90%) will be referred for legal intervention. This could lead to being prosecuted.

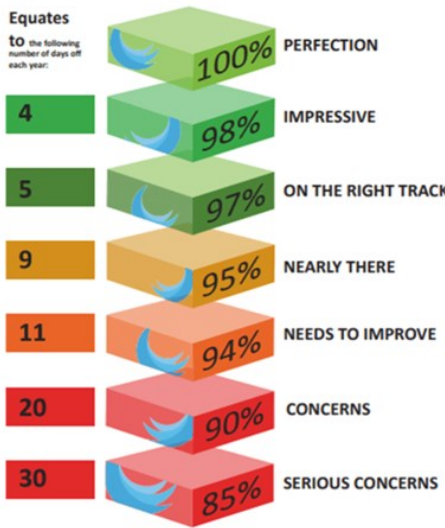
Whole School Attendance

Our Wholes School Attendance Target is **96%**

Our current whole school attendance this week is **94.8%**

As you can see, we are so close to our goal. Everyone needs to work together to reach our target!

How is your child doing?



Attendance Challenge

Poor attendance will be challenged:

- phone calls
- home-visits
- attendance meetings
- referral to local authority
- below 50% is flagged as educational neglect
- referred for fine

Attendance Support

If you need support in getting your child to school, please speak to Mrs Chesney-Ly, Mr Ludlam or Mrs Smith. We can offer:

- subsidised breakfast club
- travel support
- referral to school nurse
- Early Help support
- counselling